

Veröffentlichungen ARCO

2015

-ARCO Newsletter no.10--

We are mourning and deeply shocked what happened to so many Nepali people and the whole country by the disastrous earthquake on Saturday 25th 2015



Table of Contents	page
Changes in the landscape – a Review for the SUMMEF Nature & Recreation Park development in the aerial views by “Google Earth”	2
A review on the TRCC development from the beginning in 2012 till spring 2015	4
Special membership offers cum literature supply – a donation award	8

💧💧💧**Make your Donation Now!!!!**

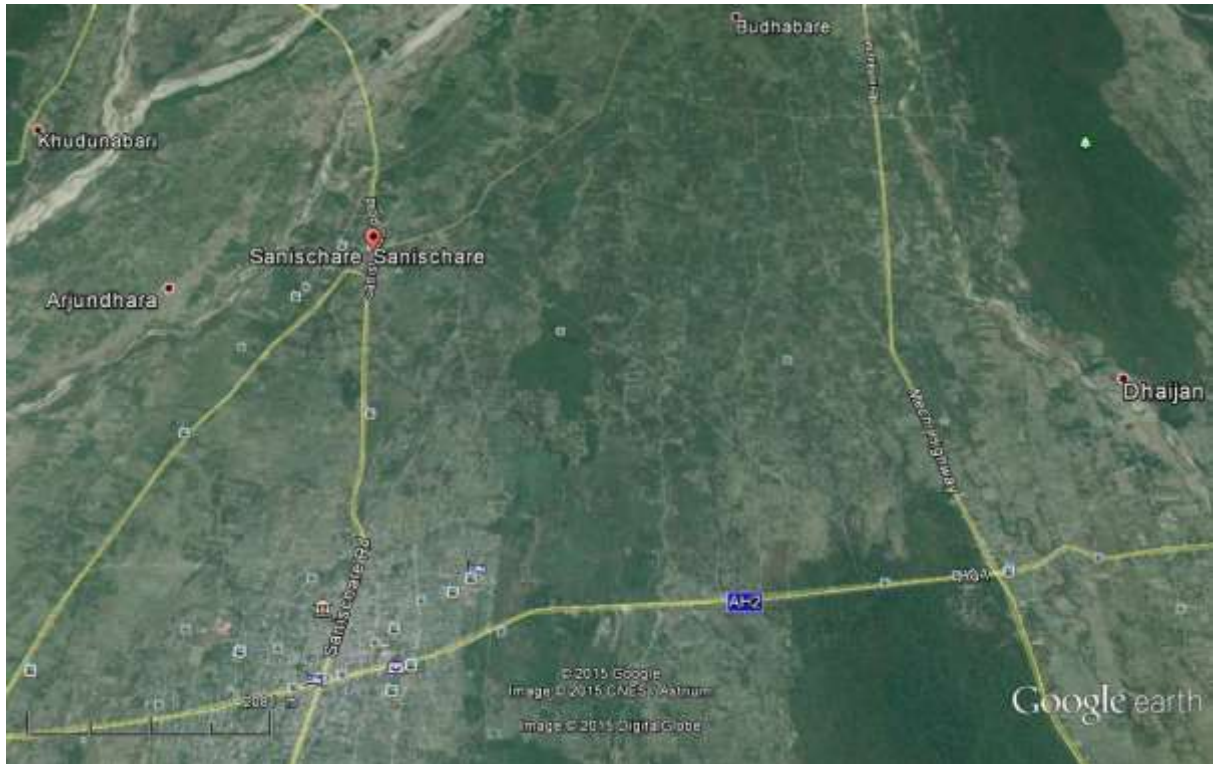
HELP THE NEPALI PEOPLE

and contribute with your generous donation to the seriously working international aid organisations to fight for survival rescue health and sanitary improvements after the

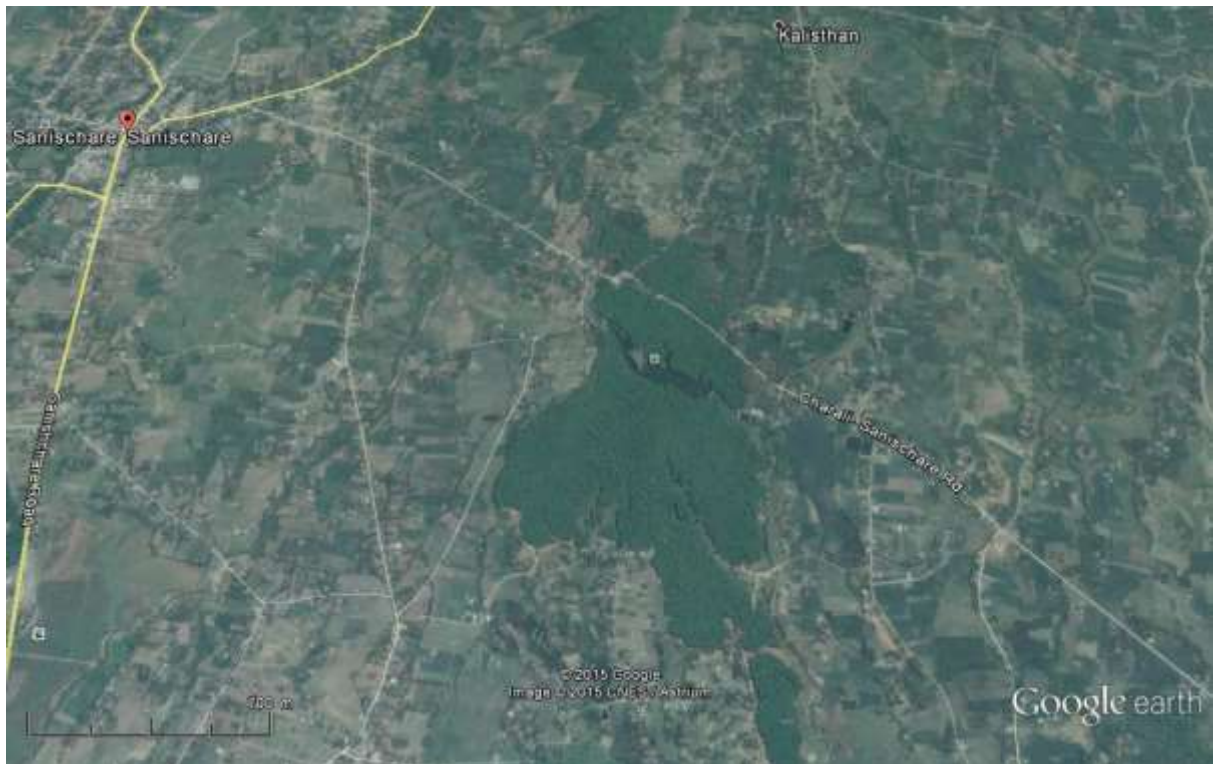
loss of thousands of people and their living conditions.

Any help is valuable and we suggest you to look for the donation facilities at your country's aid programs or to the helping international NGOs.

- **Changes in the landscape – a Nature Park development in the views by “Google Earth”**



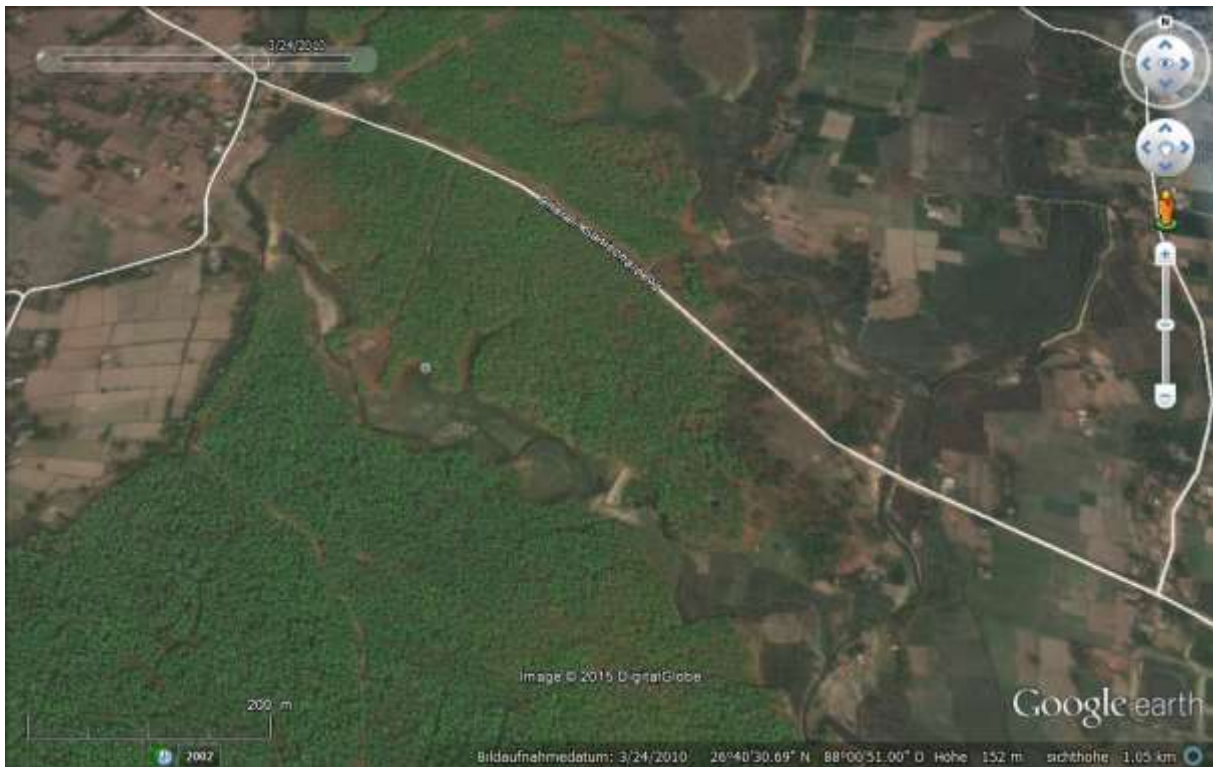
Aerial view by „Google Earth“ on general geographic situation of location. The SUMMEF Nature & Recreation Park is situated ESE of Sanischare village. AH2 is the East-west Highway through whole lowland Nepal



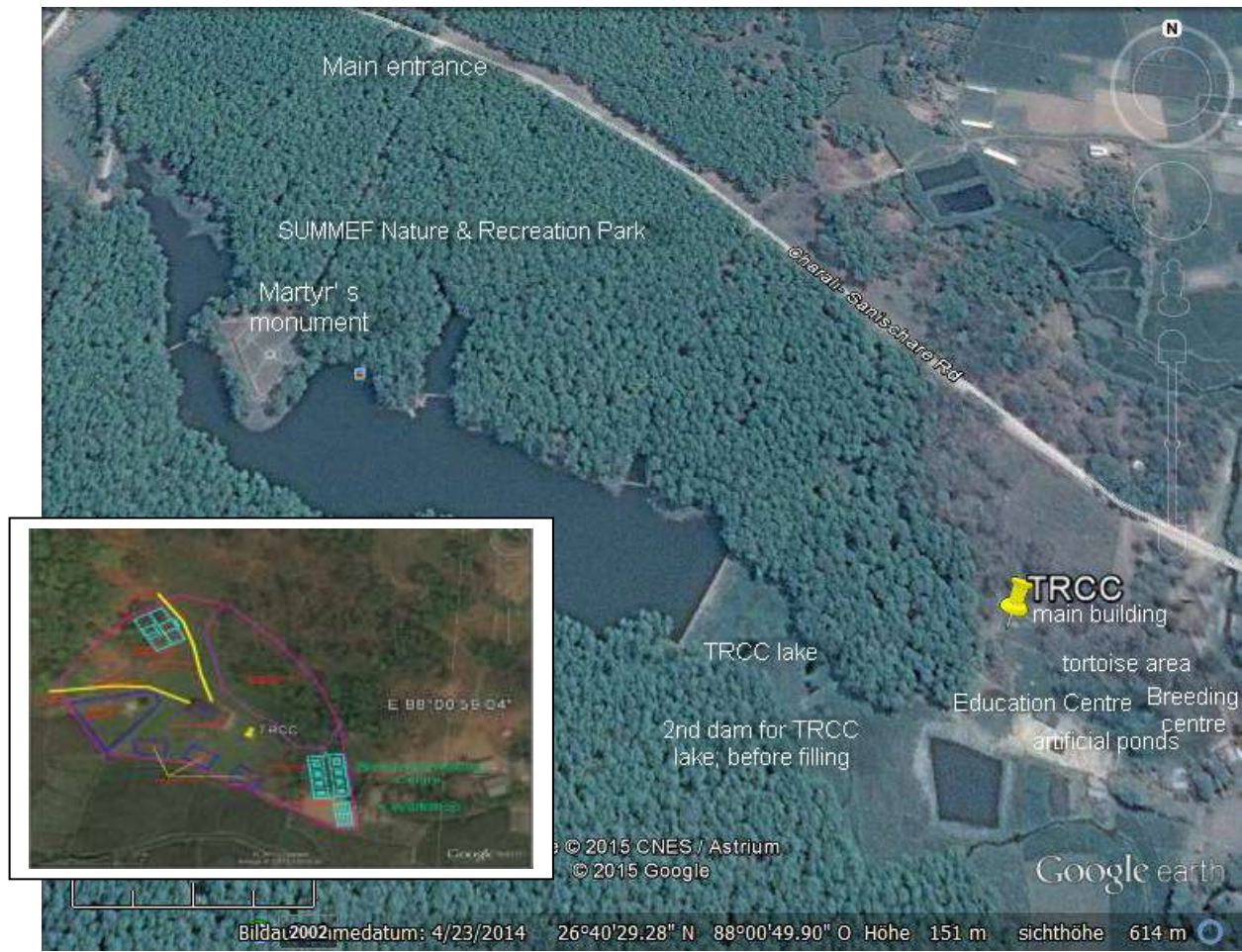
Close up of aerial view showing whole forested area where SUMMEF Park cum TRCC is situated



In June 2002 can already be seen the clearing in the forest for the martyrs monument place –with access way from Sanichare main road and still the old drainage of the small river



According to “Google Earth” aerial view in June 2010 when the main dam was built still before filling the lake



In April, 23rd 2014 – aerial view by „Google Earth“. insert pic. The general TRCC plan

- **A review on the TRCC development from the beginning in 2012 till spring 2015**

Official commencement in 2012 for the first Non-Government Turtle Rescue & Conservation Centre by ARCO – Nepal at „Budo Holi“ in Sanichare Jhapa district/ SE Nepal

History

Thirty years passed since 1982 with the first signing of a Memorandum of Understanding (MOU) by ARCO-Nepal what was the first government acceptance to contribute to Turtle Conservation in Nepal and had been given by King Mahendra Trust of Nature Conservation. A first listing of amphibians and reptiles (Schleich, 198..) resulted in 120 species, what in 2002 reached already 180 species (Schleich & Kaestle, 2002)

In April 2012 finally ARCO-Nepal and SUMMEF signed a MOU that at Sanichare Martyrs Memorial Park in Jhapa region, SE Nepal, a Turtle Rescue and Conservation Centre shall be developed within the following years. In the same summer 2012 we also received the official government approval that ARCO-Nepal as Non Government Organisation (NGO) can collaborate with the Nepali authorities to develop such a TRCC in the Terai.

Previous studies show that various roof-shelled turtle species such as *Pangshura flaviventer*, *Pangshura smithi smithi*, *Pangshura tentoria circumdata*, softshell turtles like *Nilssonina gangetica*, *Nilssonina hurum*, *Lissemys punctata*, and terrestrial species like *Indotestudo elongata* and *Melanochelys tricarinata* were existing in Jhapa.

Location data

The turtle rescue and conservation area (TRCC) is situated in a wetland area, locally called 'Budho Holi' or 'Bhimsen Pokhari'. It is located at Sanichare VDC ward No.- 9, Goldhap about 6 km north from Birtamode, in Jhapa district. Jhapa district occupies an area of 1606 sq. km and is located geographically between 26°20' to 26° 50' N and 87°39' to 88°12' E, at an altitude of 56 to 381m above sea level (Rai, 2004). The area is surrounded with beautiful Sal (*Shorea robusta*) dominated forests and belongs to Martyr's Memorial Foundation- SUMMEF ('Sukhani Shahid Smriti Pratisthan') occupying an park area of 22.4 hectares. The Turtle Rescue and Conservation Centre (TRCC) is established as joint venture program of Amphibian and Reptile Conservation Society Nepal (ARCO-Nepal) and Sukhani Martyr's Memorial Foundation (SUMMEF).

The planning phase

Plans for the TRCC are ambitious. It will have multiple functions as a centre for research, conservation, education and conservation-tourism and activities related with freshwater and terrestrial turtles. It will also serve as a rescue centre for turtles confiscated from illegal trade and rescued from the food markets or private owners.

Physical facilities for the centre shall include an open-air hatchery, a building as information centre and to house laboratory and office. Others shall be

- ponds for freshwater turtles and outdoor enclosures for rescued turtles,
- ponds for captive breeding programs,
- outdoor exhibits for interpretive purposes and an education centre.

Staff, visiting scientists, and volunteers shall have a basis to work and stay. Its main objective is to serve as "living" conservation centre for turtles and to conduct research in all aspects of their biology and ecology.

Detailed studies of flora and fauna, limnological studies and socio-ecological surveys are still needed

Activities in 2012

Dam, ponds and other constructions started in 2012 (Newsletter 02/2012)

The main dam for the recreation lake area at Sanichare Martyrs Park is now finalized and attached to it (see photo above) the area for the future TRCC lake is shown. Other activities as follows:

Provision of electricity	June, 2012
Provision of security guard	July, 2012
Plantation in vacant area within TRCC	August, 2012
Provision of drinking water	November, 2012
Repairing of main dam	September, 2012
Construction of main gate	Dec, 2012
Permission for road sign board erections	received

Recently, during summer 2012 turtle species like *Lissemys punctata*, *Nilssonina hurum* and *Pangshura flaviventer* could have been translocated into the main lake of TRCC area

Species	number/ID	size (dorsal/ventral)	weight (in g)
<i>Lissemys punctata</i>	LP 1/8-12	9.5 x 9.0/ 9.1 x 8.8	135
<i>Lissemys punctata</i>	LP 2/8-12	8.0 x 7.5/ 7.8 x 7.7	65
<i>Lissemys punctata</i>	LP 3/8-12	7.1 x 7.0/ 7.0 x 6.8	45
<i>Lissemys punctata</i>	LP 4/11-12	10.5 x 9.5/ 10.0 x 8.5	45
<i>Nilssonina hurum</i>	NH 1/9-12	47 x 37/ 42.2 x 37.5	9300
<i>Pangshura flaviventer</i>	PF 1/9-12	16 x 12/ 15 x 11.5	180

Realisation and printing of Turtle Field ID-Cards for Nepal incl. delivery to all Nat Park wardens of DNPWS

Realisation and printing of students books for Nepal in 4 vols.: Amphibians, Turtles, Snakes, Lizards & Crocodiles and offering for fee download on renewed ARCO website: www.arco-nepal.de

Activities in 2013

In **November 2013** the efforts of SUMMEF made it possible: The second dam is constructed to allow more turtles a future home and better separation of the various species as another independent lake for the conservation issues.

The TRCC shall receive an independent but attached dammed artificial lake of more than 1,000 sqm, a dammed pond of 260 sqm. In an area of approx. 3,500 sqm, to be fenced finally and partly forested, several 40 sqm sized pools and various breeding and rearing ponds will be constructed. A central building for visitors, guests, laboratory etc., an education centre and perhaps a worshipping place shall become installed, too.

Construction of artificial TRCC lake approx. 1000 qm

Construction of smaller dam for earthen lake of approx. 260 qm

Elaboration of detailed plans by our collaborating supporters and member D. Jose Maria Rodriguez Linde & D. Diego Tovar

Construction of three ponds each approx. 40 sqm

Pipeline of 150 m for lake and pond filling

Planning of Education Centre

Elaboration and printing of a field guide (pag. 625) for the amphibians and reptiles of Nepal

Activities in 2014

2014 finalizing ponds, terrestrial enclosures, visit to Nepal by Arco-Nepal president

Landing on 15th February in Nepal a very cordial welcome was given to ARCO-Nepal president Hermann Schleich by our Nepali counterparts, SUMMEF president Devraj Ghimire, Kaluram Rai, Nabin Bhattarai and KaluRam Rai.

Having arrived at the project site a huge group of local neighbouring village people received ARCO visit with garlands and bunches of flowers showing their acceptance and integration of the Turtle conservation project as most important part for a sustainable future and common understanding.

Heavy project work had been realized during the year by employing local people for excavation and cementation work for the new ponds and small lake. Heavy iron armouring, plastic lining and concrete plastering shall give long durability to the installations.

Finalization of the terrestrial enclosure

Ceremonial program for laying of foundation stone for TRCC building

Construction of area for terrestrial turtles in small forested part with strong mesh wire and water dishes

Setting up of ponds with wooden logs, escape barriers on top of mesh wire and transferring waterplants

Spring to summer: construction of compartments in 260 sqm pond for bigger softshells

Summer –autumn: trips to various places in E-Nepal for rescuing turtles

December commencement of building construction with basement foundation

December 8th first egg laying occurred at TRCC

Activities in 2015

Inauguration and Opening of SUMMEF Recreation & Nature Park to public

Establishing local police guard at Park

ARCO-Nepal turtle sensibilisation and awareness program by Prof. Dr. K.R. Rai & N. Bhattarai

Turtle Census at TRCC in March 2015 with IDS (individual data sheets)

Writing and submission of further project applications (Telefonica: rejected; Chelonian Conservation : rejected)

Finalizing of ground floor building complex with office, guest room, lab etc.

Next steps for May 2015 at the Budo Holi TRCC –

The breeding and rearing unit & simple workshop

The existing rearing and breeding area at Chitwan National Park turned out to be useful for that purpose and we try to take over that concept by constructing 6 small ponds of 100 x 150 cm and four of 200 x 200 cm. A general depth of 60 cm shall allow proper catching and handling of specimens and of course an individually controllable in- and outflow for proper and easy filling with fresh water and emptying for cleaning and disinfection are the basic conditions. Also two small areas for terrestrial species shall be included of same size. The whole area must be fenced with strong chicken mesh wire against predators being dug into the ground till 30 cm and also the roof and lateral sides have to receive the same protection and natural grasses for giving shade partially. Each pool must be fenced individually and have a simple but proper door together with a small pathway or service corridor appropriate for reaching both sides of the tanks.

To be done in 2015, and probably being finalized till end of the year

Education centre cum Nature trail

The physical units of the education centre shall be realized by

- Conversion of the existing Picnic shelter into an Education Centre
- Didactical open air course with explicative panels at the tortoises' reserve
- "Travelling suitcase" with information material to be brought to schools in Terai
- A mobile education unit set up in a suitcase to be used at the various schools and institutes containing the exhibition parts with its general information for education and conservation
- In autumn, postmonsoon season to organize the infrastructures for office and lab

Thirteen panels of 100 x 100 cm will fit inside the first hall and four more in the outer (photo to the left). Also another thirteen will be mounted outside – all of them telling the Natural History of turtles of Nepal also its significance in para-medicine, religion and superstition.

We do have the idea, concept and the place – but clearly spoken – we need also still some help from your side – with some donations to make this rearing and breeding area a reality!!!!!!!

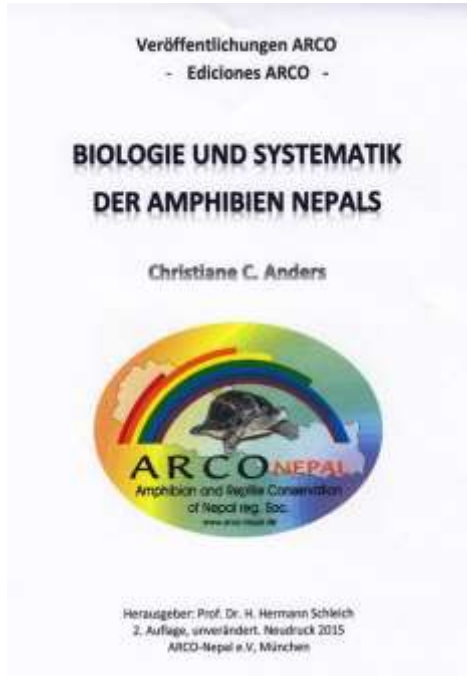
Donations and collaborations received so far

We are extremely glad to acknowledge all the donations in 2014 having reached to 12.435,76 € including donations and membership fees.

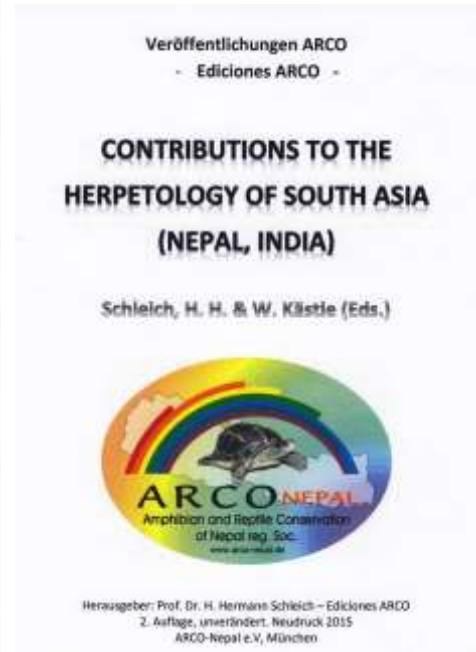
Every Euro or Dollar is wanted for crowdfunding!

YOUR membership registration with bank domiciliation allows a reduced offer for our digitally reprinted volumes on the herpetology of Nepal and S-Asia. This helps to contribute to our project work at S-Nepal constructing a first INGO Turtle Rescue & Conservation Centre.

We need your membership registration cum bank domiciliation and a 50.- EURO donation added to receive one of both below shown books as e-books or reprints.



630 pp



420 pp

Make your preorder as this new contribution will be printed digitally and costs can become reduced by growing quantity ordered. Hardprints should be available this summer 2015.

Veröffentlichungen ARCO

- Ediciones ARCO -

STUDIES ON CAENOZOIC SAUROPODS OF ASIA

2015



Herausgeber: Prof. Dr. H. Hermann Schleich
ARCO-Nepal e.V., München 2015

Table of Contents

RAHUL SRIVASTAVA & H. HERMANN SCHLEICH:
Review of Neogene-Quaternary turtles from
the Indian Subcontinent

RAHUL SRIVASTAVA & H. HERMANN SCHLEICH:
Review of fossil Caenozoic crocodile
material
from the Siwaliks of India and Nepal

RAHUL SRIVASTAVA & H. HERMANN SCHLEICH:
On prismless enamel in recent crocodylian
dentition

approx. pp. 280

Membership Declaration on our website!!

Account-no. 1000099984 BIC SSKMDEMMXXX
Bank/Credit Institute: Stadtparkasse München
BLZ 70150000 IBAN DE 95701500001000099984

Membership contributions and any donations from SAARC countries please pay directly upon our account at the
Himalayan Bank Ltd, Kathmandu (Thamel Branch), Nepal
Account no: 019 0005 5040014 / SWIFT HIMANPKA